



Thesis Easy

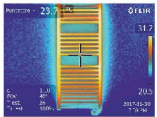
Special device that controls the power output of the heating element between 20% and 100% by acting on the rotation of the knob. An important element for the safety of people is the useful presence of the NTC sensor which prevents the ambient temperature from exceeding 37° C, in compliance with European legislation. It can be assembled with different heating elements that can be easily found or replaced by the major European manufacturers. Possibility to select three preset programs as indicated in the guide for activating the operating times:

- 1) Boost2h command of 100% continuous heating for 2 hours;
- 2) T24h command starts 2h Boost automatically every day at the same time (2h on, 22h off) (typically for morning showers);
- 3) T12h command starts 2h Boost automatically every 12 hours (2h on, 10h off, 2h on, 10h off (typically morning and evening showers)).



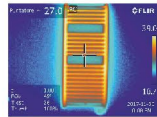
Example of thermographics measures into 1000x500 mm towel heater.

Selected Power: 20%



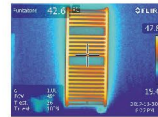
Max fluid temp.: 31,7°C

Selected Power: 40%



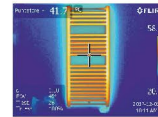
Max fluid temp.: 39,0°C

Selected Power: 60%



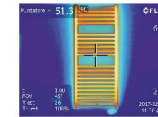
Max fluid temp.: 47,8°C

Selected Power: 80%



Max fluid temp.: 58,0°C

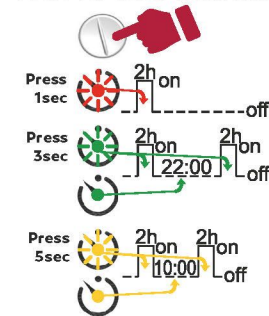
Selected Power: 100%



Max fluid temp.: 67,9°C



Guide for timer activation



Technical specifications

Operational modes	Boost2h, Timer12h, Timer24h, Stand-By. Adjustment from 20% to 100% of the maximum heating element power
Conformity marking	CE
Supply voltage	230 VAC - 50 Hz
Power max	2000W
Appliance classes	Class I – Class II
IP protection	IP44
Size	113mm x 73mm x 39mm
Available colours	White, Chrome